

## Notices to Mariners, SWEDEN Swedish Maritime Administration



### Areas in Swedish Notices to Mariners



**SJÖFARTSVERKET**

Editorial office  
Swedish Maritime Administration  
Ufs  
601 78 NORRKÖPING  
Sweden  
tel: 0771 630 605  
e-mail: [ufs@sjofartsverket.se](mailto:ufs@sjofartsverket.se)  
Publisher:  
Hydrographer Patrik Wiberg

## Affected charts and Notices

Underrättelser för sjöfarande (Ufs) is an official Swedish publication which provides information pertaining to shipping in the Baltic Sea Area and Kattegat, as well as Skagerrak east of a line drawn between Hanstholm and Lindesnes.

The information on foreign waters is largely confined to significant occurrences which may affect Swedish charts. Ufs is thus wholly unsuited for the purpose of keeping BA-charts and/or other national charts updated.

An asterisk (\*) in front of the number denotes that the notice is based on information obtained from Swedish source material and that the details contained therein affect Swedish waters.

When the letter (P) is adjacent to the notice number it serves as an indication that the notice is of a preliminary nature. Such notices will later be replaced by corresponding ones containing definitive information.

Similarly, when the letter (T) is placed adjacent to the notice number it denotes that the notice is of a temporary nature. In case no period of validity is given, this type of notice will be rendered invalid either when a new Temporary Notice is promulgated or if pertaining conditions cease to exist.

Bearings are true and given clockwise from 000° to 360° and, when given in conjunction with lights, indicate a direction from seaward.

Featured chartlets are primarily intended to simplify chart correction work and are not always true to scale. In general, they show the largest charted scale available for respective area.

Responsibility for the factual content published in Ufs rests with the informant.

Chart corrections and other information attributed to a specific geographical area can be found under NOTICES. Other information is found under ANNOUNCEMENTS, starting on pg. 3.

The periodical Ufs is normally published every Thursday and can be downloaded as a PDF-file from the homepage of the Swedish Maritime Administration. Note that as the file is automatically generated from a database unintentional page breaks may occur at random.

Further information on the use of Ufs can be found in the annual publication *Ufs A*.

## Reporting dangers and errors

All observations concerning floating aids to navigation, unlit beacons and lights, objects adrift or any other occurrence which may have a detrimental impact on safety at sea are to be forwarded to Sweden Traffic at the earliest possible opportunity.

Call: Sweden Traffic

VHF Channel: Appropriate working channel

Phone: +46 771 630 685 (24/7)

E-mail: [swedentraffic@sjofartsverket.se](mailto:swedentraffic@sjofartsverket.se)

Affected charts	Notice no	Sign	Affected charts	Notice no	Sign
6	13904 (T)		6145	13784	
7	13901 (T)		6145	13910	
7	13902 (T)		6162	13852 (T)	
7	13904 (T)		6162	13872 (P)	
8	13901 (T)		6162	13911 (T)	
8	13902 (T)		6163	13784	
61	13852 (T)		6163	13786	
61	13911 (T)		6163	13787	
62	13852 (T)		6163	13788	
62	13904 (T)		6163	13852 (T)	
62	13911 (T)		6163	13911 (T)	
71	13904 (T)		6171	13872 (P)	
74	13901 (T)				
74	13902 (T)				
83	13901 (T)				
83	13902 (T)				
93	13892 (P)				
612	13906				
615	13914 (P)				
616	13852 (T)				
616	13872 (P)				
616	13910				
616	13911 (T)				
623	13874				
731	13904 (T)				
839	13895 (P)				
839	13901 (T)				
839	13902 (T)				
924	13913 (T)				
933	13892 (P)				
6141	13912				
6142	13912				
6143	13906				
6143	13909				
6143	13914 (P)				
6144	13909				
6144	13910				
6144	13914 (P)				

## ANNOUNCEMENTS

No Announcements in this booklet.

## NOTICES

### The Quark

\* 13903

Chart:

Finland. The Quark. Approach to Vasa. Buoyage.

<b>Delete</b>	virtual AIS, lateral mark function	a)	63-18,68N	020-35,74E
<b>Delete</b>	virtual AIS, lateral mark function	b)	63-16,12N	020-48,08E
<b>Insert</b>	starboard hand light buoy FI G 3s	c)	63-18,68N	020-35,74E
<b>Insert</b>	starboard hand light buoy FI G 3s	d)	63-16,12N	020-48,08E

Bsp Bottenhavet N 2013/s07, Bsp Bottenhavet N 2019/s07

Sjöfartsverket. Publ. 3 april 2019

### Northern Baltic

\* 13784

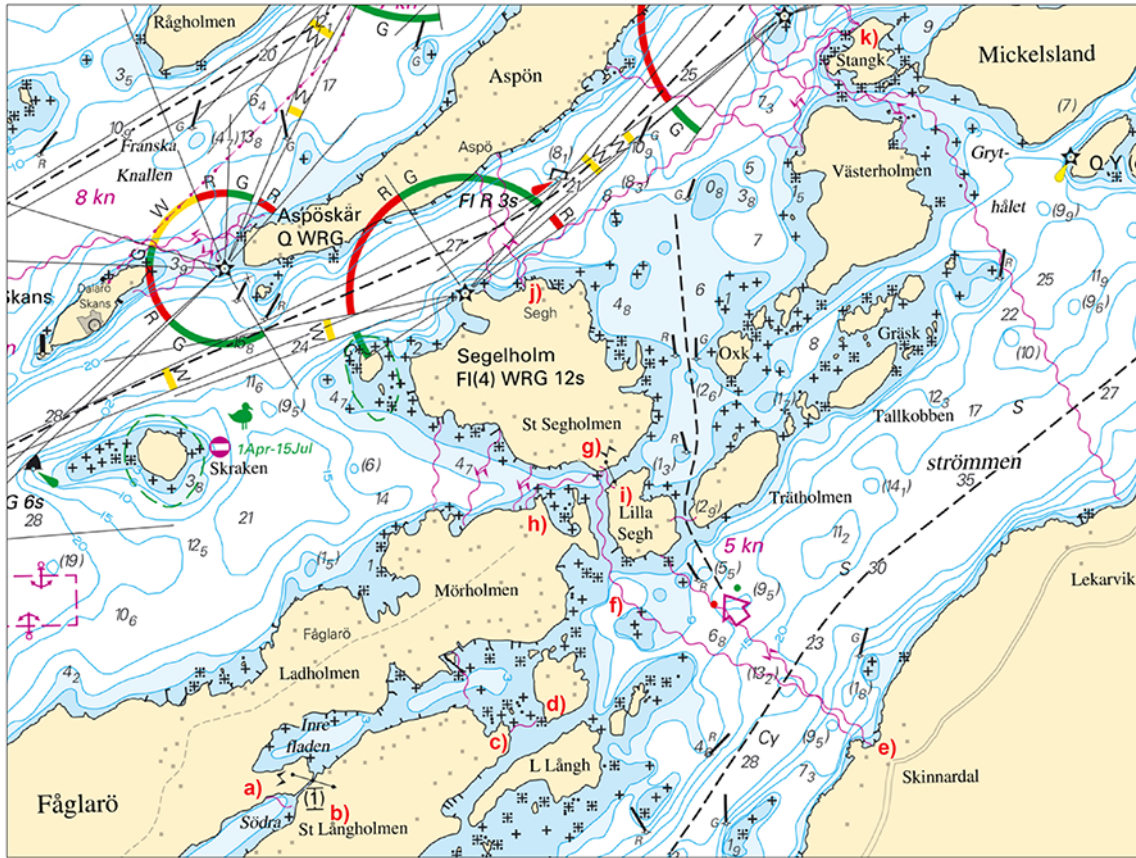
Chart: 6145, 6163

Sweden. Northern Baltic. NW of Ornö. Submarine cables. Fiber.

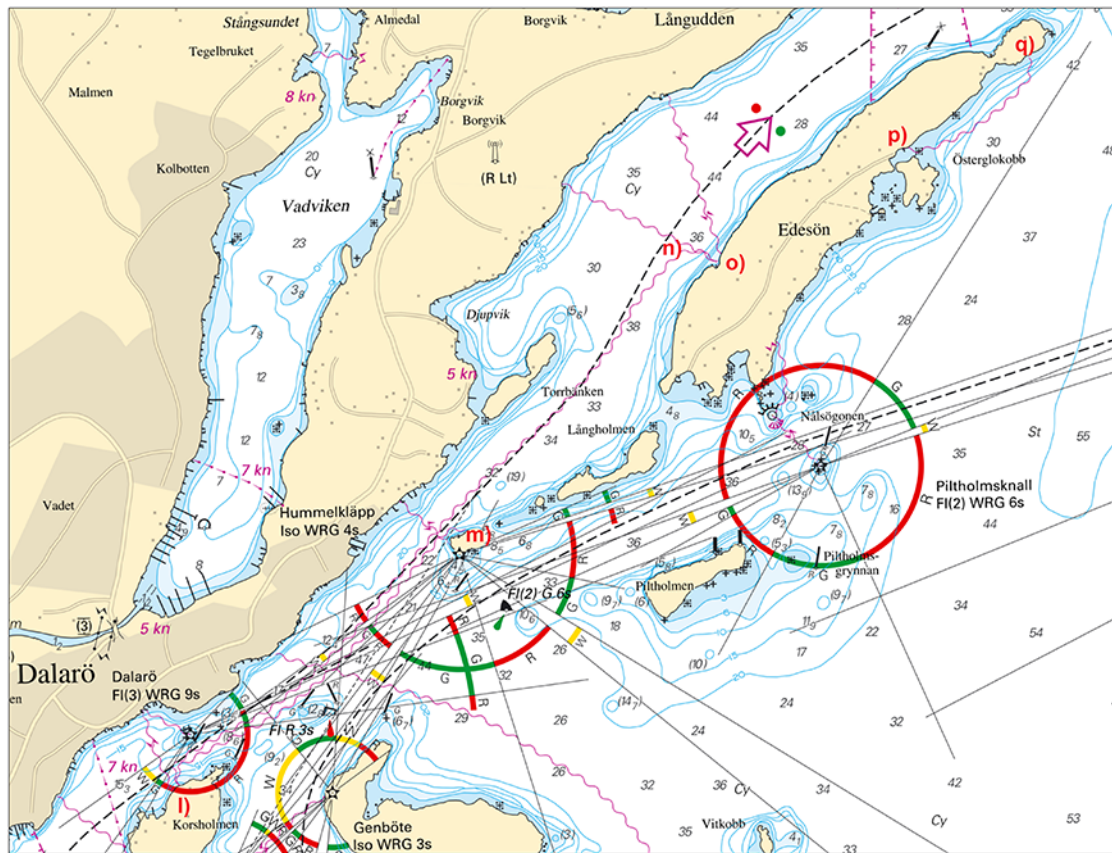
<b>Insert</b>	submarine cable a) - b)	a)	59-06,00N	018-23,94E	Fåglarö
		b)	59-05,98N	018-24,03E	Stora Långholmen
<b>Insert</b>	submarine cable c) - d)	c)	59-06,10N	018-24,70E	Stora Långholmen
		d)	59-06,12N	018-24,81E	
<b>Insert</b>	submarine cable e) - f) - g)	e)	59-06,07N	018-25,82E	Ornö
		f)	59-06,31N	018-25,06E	
		g)	59-06,52N	018-25,00E	Stora Segholmen
<b>Insert</b>	submarine cable h) - g)	h)	59-06,45N	018-24,76E	Mörholmen
<b>Insert</b>	submarine cable i) - g)	i)	59-06,49N	018-25,02E	Lilla Segholmen
<b>Insert</b>	submarine cable j) - k)	j)	59-06,81N	018-24,77E	Stora Segholmen
		k)	59-07,21N	018-25,80E	Stangkobben
<b>Insert</b>	submarine cable l) - m)	l)	59-07,93N	018-25,15E	Korsholmen
		m)	59-08,45N	018-26,37E	
<b>Insert</b>	submarine cable l) - n) - o)	n)	59-09,05N	018-27,31E	
		o)	59-09,01N	018-27,44E	Edesön
<b>Insert</b>	submarine cable p) - q)	p)	59-09,26N	018-28,20E	Edesön
		q)	59-09,45N	018-28,73E	Edesön

Note: All cables are depicted in chart 6163 edition 8.0.

Bsp Stockholm M 2018/s34, s35, s42, s44, s49, Bsp Stockholm S 2018/s06, s09



Chartlet 1



Chartlet 2

\* 13786

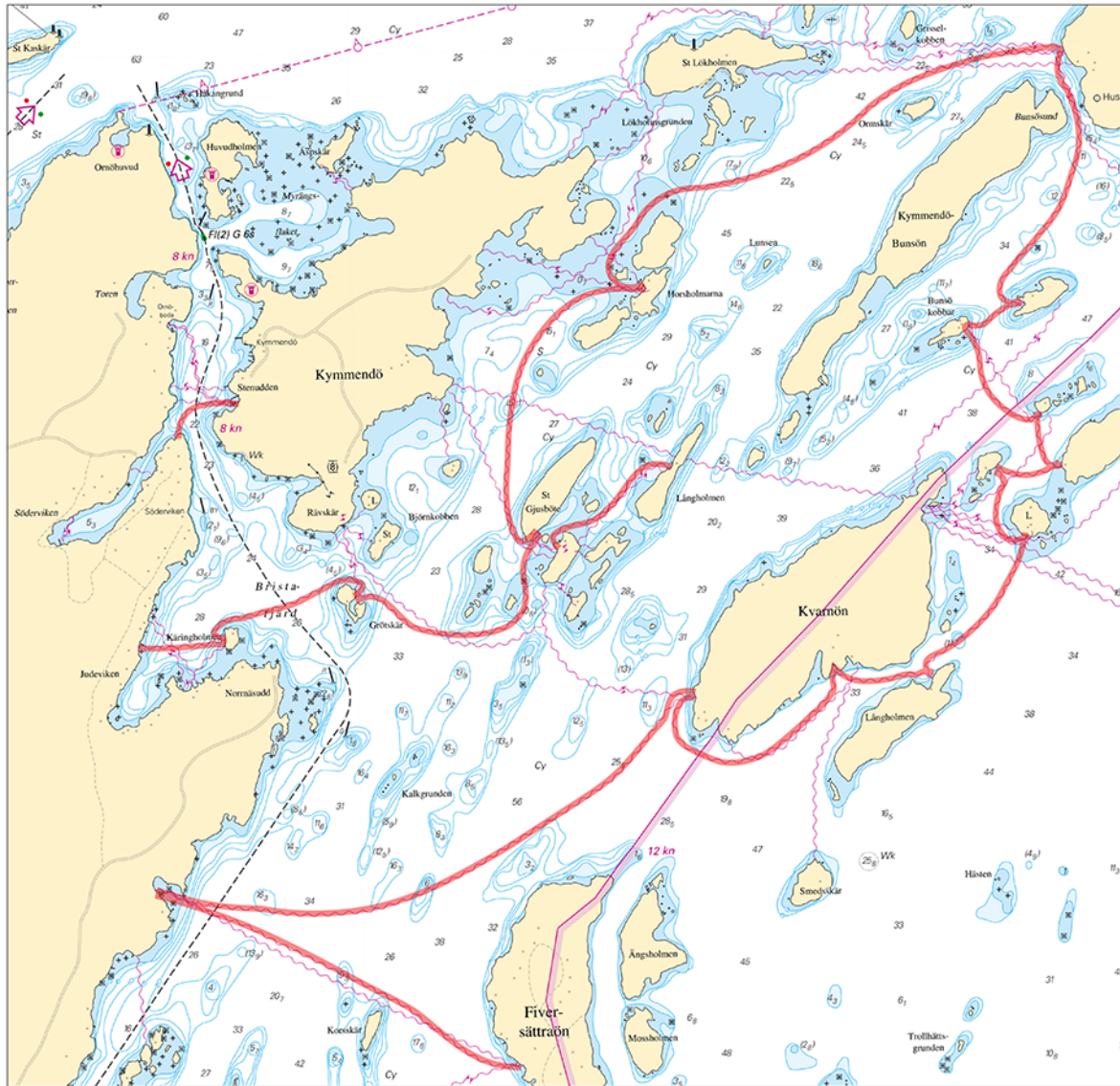
Chart: 6163

## Sweden. Northern Baltic. NE of Ornö. Submarine cables. Fiber.

<b>Insert</b>	submarine cable a) - b)	a)	59-06,36N	018-28,96E	Ornö
		b)	59-06,47N	018-29,34E	Kymmendö
<b>Insert</b>	submarine cable c) - d)	c)	59-05,75N	018-28,73E	Ornö
		d)	59-05,76N	018-29,23E	Kärringholmen
<b>Insert</b>	submarine cable d) - e)	e)	59-05,88N	018-29,99E	Grötskär
<b>Insert</b>	submarine cable e) - g)	f)	59-05,80N	018-30,92E	
		g)	59-06,07N	018-31,05E	St Gjusböte
<b>Insert</b>	submarine cable g) - i)	h)	59-06,53N	018-30,95E	
<b>Insert</b>	submarine cable i) - l)	i)	59-06,78N	018-31,70E	Horsholmarna
		j)	59-06,83N	018-31,47E	
		k)	59-07,07N	018-31,83E	
		l)	59-07,47N	018-34,14E	Mörtö-Bunsön
<b>Insert</b>	submarine cable l) - o)	m)	59-07,20N	018-34,24E	
		n)	59-06,75N	018-33,73E	
		o)	59-06,72N	018-33,89E	
<b>Insert</b>	submarine cable o) - p)	p)	59-06,65N	018-33,57E	Bunsökobbarna
<b>Insert</b>	submarine cable p) - q)	q)	59-06,39N	018-33,97E	
<b>Insert</b>	submarine cable q) - r)	r)	59-06,23N	018-34,08E	
<b>Insert</b>	submarine cable r) - s)	s)	59-06,24N	018-33,70E	
<b>Insert</b>	submarine cable s) - t)	t)	59-06,03N	018-33,88E	
<b>Insert</b>	submarine cable t) - u)	u)	59-05,61N	018-33,32E	Långholmen
<b>Insert</b>	submarine cable u) - v)	v)	59-05,66N	018-32,74E	
<b>Insert</b>	submarine cable v) - x)	x)	59-05,57N	018-31,95E	Kvarnön
<b>Insert</b>	submarine cable x) - z)	y)	59-05,00N	018-30,38E	
<b>Insert</b>	submarine cable z) - aa)	z)	59-05,02N	018-28,81E	
		aa)	59-04,48N	018-30,89E	Fiversättraön
<b>Insert</b>	submarine cable bb) - cc)	bb)	59-06,02N	018-31,16E	
		cc)	59-06,25N	018-31,83E	Långholmen

Note: All cables are depicted in chart 6163 edition 8.0.

Bsp Stockholm M 2018/s44, s45, s49, s50, Bsp Stockholm S 2018/s06, s07



New cables

Stockholms Skärgårdsnät AB. Publ. 3 april 2019

\* 13787

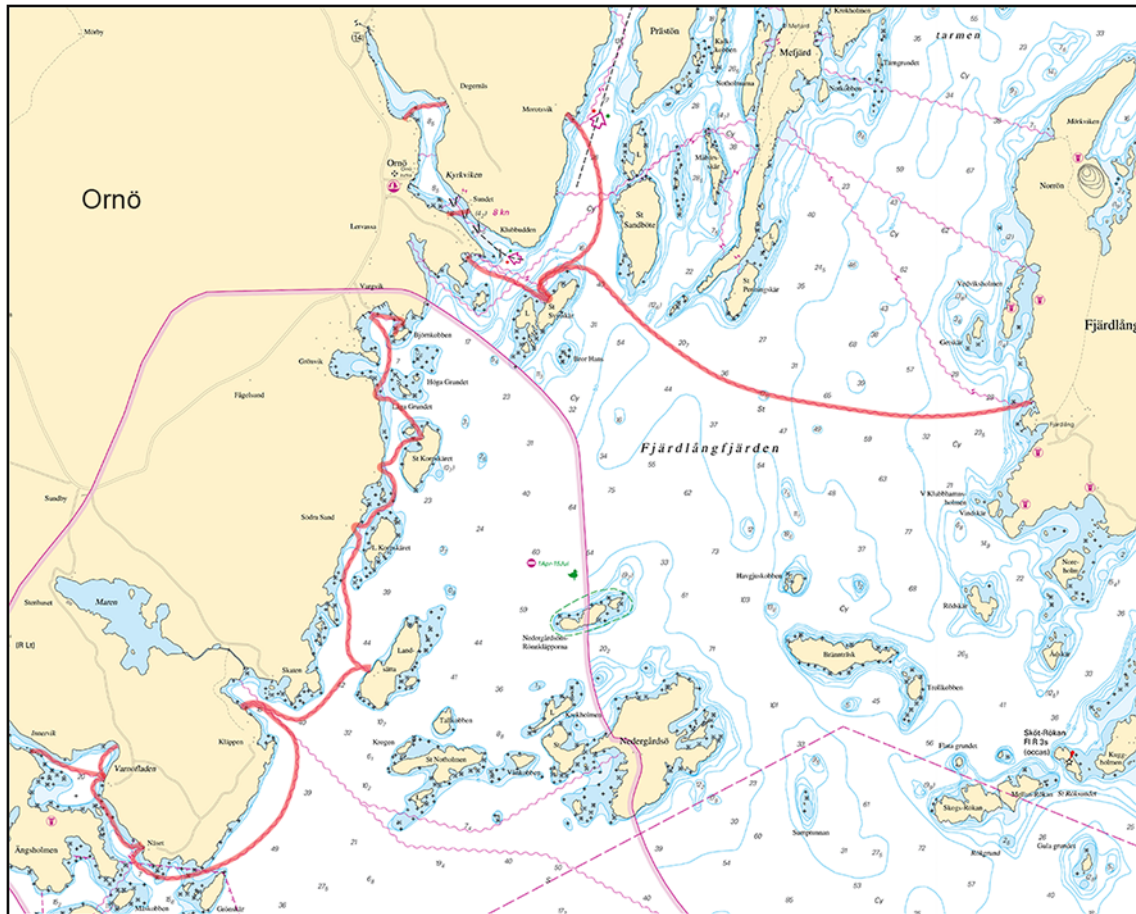
Chart: 6163

Sweden. Northern Baltic. SE of Ornö. Submarine cables. Fiber.

<b>Insert</b>	submarine cable a) - b)	a)	59-03,37N	018-25,92E
		b)	59-03,42N	018-26,25E
<b>Insert</b>	submarine cable c) - d)	c)	59-02,98N	018-26,28E
		d)	59-03,00N	018-26,42E
<b>Insert</b>	submarine cable e) - f)	e)	59-02,84N	018-26,41E
		f)	59-02,65N	018-27,02E
<b>Insert</b>	submarine cable f) - i)	g)	59-02,72N	018-26,97E
		h)	59-02,88N	018-27,38E
		i)	59-03,39N	018-27,17E
<b>Insert</b>	submarine cable f) - g) - j) - k) - l)	j)	59-02,77N	018-27,32E
		k)	59-02,28N	018-28,70E
		l)	59-02,25N	018-30,75E
<b>Insert</b>	submarine cable m) - n)	m)	59-02,57N	018-25,88E
		n)	59-02,52N	018-25,86E
<b>Insert</b>	submarine cable m) - o)	o)	59-02,60N	018-25,65E
<b>Insert</b>	submarine cable o) - p)	p)	59-02,27N	018-25,70E
<b>Insert</b>	submarine cable p) - q)	q)	59-02,10N	018-26,05E
<b>Insert</b>	submarine cable q) - r)	r)	59-01,99N	018-25,76E
<b>Insert</b>	submarine cable r) - t)	s)	59-01,85N	018-25,85E
		t)	59-01,76N	018-25,57E
<b>Insert</b>	submarine cable t) - u)	u)	59-01,18N	018-25,67E
<b>Insert</b>	submarine cable u) - v)	v)	59-01,04N	018-24,68E
<b>Insert</b>	submarine cable v) - w)	w)	59-00,49N	018-23,93E
<b>Insert</b>	submarine cable w) - x)	x)	59-00,76N	018-23,63E
<b>Insert</b>	submarine cable x) - y)	y)	59-00,86N	018-23,06E
<b>Insert</b>	submarine cable x) - z)	z)	59-00,89N	018-23,74E

Note: All cables are depicted in chart 6163 edition 8.0.

Bsp Stockholm M 2018/s45, Bsp Stockholm S 2018/s07, s11, s16



New cables

Stockholms Skärgårdsnät AB. Publ. 3 april 2019

\* 13788

Chart: 6163

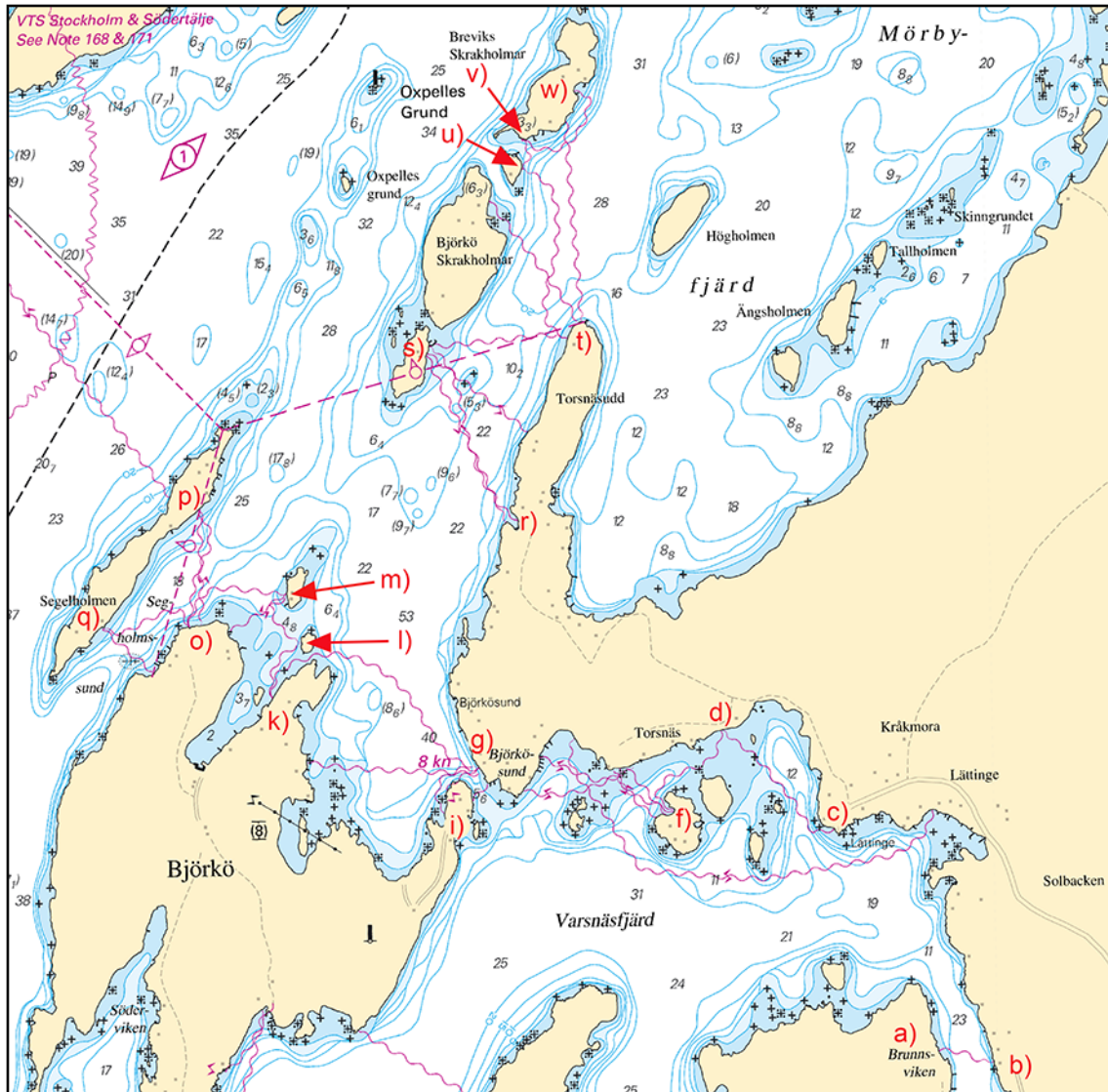
Sweden. Northern Baltic. SW of Ornö. Submarine cables. Fiber.



<b>Insert</b>	submarine cable a) - b)	a)	59-02,26N	018-22,28E
		b)	59-02,24N	018-22,49E
<b>Insert</b>	submarine cable c) - d)	c)	59-02,70N	018-21,90E
		d)	59-02,89N	018-21,48E
<b>Insert</b>	submarine cable d) - e) - f)	e)	59-02,78N	018-21,23E
		f)	59-02,74N	018-21,30E
<b>Insert</b>	submarine cable g) - i)	g)	59-02,83N	018-20,57E
		h)	59-02,80N	018-20,41E
		i)	59-02,74N	018-20,43E
<b>Insert</b>	submarine cable g) - j) - k)	j)	59-03,05N	018-20,07E
		k)	59-02,97N	018-19,79E
<b>Insert</b>	submarine cable k) - l)	l)	59-03,07N	018-19,90E
<b>Insert</b>	submarine cable l) - m)	m)	59-03,17N	018-19,85E
<b>Insert</b>	submarine cable m) - o)	n)	59-03,18N	018-19,55E
		o)	59-03,11N	018-19,48E
<b>Insert</b>	submarine cable o) - p)	p)	59-03,33N	018-19,52E
<b>Insert</b>	submarine cable o) - q)	q)	59-03,11N	018-19,15E
<b>Insert</b>	submarine cable r) - s)	r)	59-03,31N	018-20,73E
		s)	59-03,65N	018-20,41E
<b>Insert</b>	submarine cable s) - t)	t)	59-03,66N	018-20,92E
<b>Insert</b>	submarine cable t) - u)	u)	59-03,99N	018-20,76E
<b>Insert</b>	submarine cable u) - v)	v)	59-04,05N	018-20,76E
<b>Insert</b>	submarine cable v) - w)	w)	59-04,14N	018-20,97E

Note: All cables are depicted in chart 6163 edition 8.0.

Bsp Stockholm M 2018/s43, Bsp Stockholm S 2018/s10



New cables

Stockholms Skärgårdsnät AB. Publ. 3 april 2019

\* 13852 (T)

Chart: 61, 616, 6162, 6163, 62

**Sweden. Northern Baltic. E of Utö. Firing exercises. April 12 - 17.**

Firing exercises will be carried out within Utö firing range during stated times. The current extension of the closed area is given in the table.

Signal ammunition is used during hours of darkness.

Information during practice times VHF channel 16, call Utö skjutfält, or phone +46 8 501 570 45. Information about upcoming practice times, phone: +46 10 823 18 23, Muskö Sjöcentral.

Date	Time	Range from shore
April 12	0900 - 1500 LT	0,6 M
April 15 - 16	0830 - 2000 LT	0,6 M
April 17	0830 - 1230 LT	0,6 M

Position: Approx.	58-54N	018-20E	Utö Firing practice area
-------------------	--------	---------	--------------------------

Not shown in ENC.

Bsp Stockholm S 2018/s17, s18, s19, s37

Försvarmakten. Publ. 3 april 2019

**\* 13872 (P)**

Chart: 616, 6162, 6171

**Sweden. Northern Baltic. Nynäshamn. Norvik. Forthcoming amendments to buoyage.**

Forthcoming changes of buoyage in Norvik and Nynäshamn. Preliminary positions as listed.

<b>Insert</b>	starboard hand light buoy FI G 5s	a)	58-55,061N	017-59,923E
<b>Delete</b>	starboard hand light buoy FI G 5s	b)	58-55,464N	017-58,702E
<b>Insert</b>	starboard hand light buoy FI G 5s	c)	58-55,812N	017-59,153E
<b>Delete</b>	starboard hand light buoy FI G 5s	d)	58-55,710N	017-59,400E
<b>Insert</b>	starboard hand spar buoy	e)	58-55,678N	017-59,413E
<b>Insert</b>	starboard hand spar buoy	f)	58-55,472N	017-59,693E
<b>Insert</b>	port hand light buoy FI R 3s	g)	58-55,495N	017-59,053E
<b>Delete</b>	port hand light buoy FI R 3s	h)	58-55,486N	017-58,907E
<b>Delete</b>	east cardinal spar buoy	i)	58-55,478N	017-59,030E
<b>Insert</b>	east cardinal spar buoy	j)	58-55,458N	017-58,696E
<b>Insert</b>	west cardinal spar buoy	k)	58-55,486N	017-58,905E
<b>Insert</b>	west cardinal spar buoy	l)	58-56,589N	017-58,991E

Not shown in ENC.

Bsp Stockholm S 2018/s20, s21, s26, s35

Sjöfartsverket. Publ. 3 april 2019

**\* 13906**

Chart: 612, 6143

**Sweden. Northern Baltic. Stockholm archipelago. Svartsö. Ingmarsö. Möja. Lighted beacons.**

<b>Amend</b>	character to FI Y 4s 1M (occas)	a)	59-25,954N	018-38,699E
<b>Insert</b>	lighted beacon FI Y 4s 1M (occas)	b)	59-26,997N	018-44,729E
<b>Insert</b>	lighted beacon FI Y 4s 1M (occas)	c)	59-27,662N	018-44,182E
<b>Insert</b>	lighted beacon FI Y 4s 1M (occas)	d)	59-28,759N	018-49,775E
<b>Insert</b>	lighted beacon FI Y 4s 1M (occas)	e)	59-26,101N	018-55,853E

Bsp Stockholm N 2018/s29, s34, s40, s44, s45, s62

Waxholmsbolaget. Publ. 3 april 2019

**\* 13909**

Chart: 6143, 6144

**Sweden. Northern Baltic. Stockholm archipelago. NE of Vindö. Harö. Eknö. Lighted beacons.**

<b>Insert</b>	lighted beacon FI Y 4s 1M (occas)	a)	59-23,779N	018-47,093E
<b>Insert</b>	lighted beacon FI Y 4s 1M (occas)	b)	59-23,275N	018-47,584E
<b>Insert</b>	lighted beacon FI Y 4s 1M (occas)	c)	59-22,666N	018-43,491E
<b>Insert</b>	lighted beacon FI Y 4s 1M (occas)	d)	59-20,185N	018-54,257E
<b>Insert</b>	lighted beacon FI Y 4s 1M (occas)	e)	59-18,129N	018-54,518E

Bsp Stockholm M 2018/s18, s25, Bsp Stockholm N 2018/s40, s44, s45

Waxholmsbolaget. Publ. 3 april 2019

**\* 13910**

Chart: 6144, 6145, 616

**Sweden. Northern Baltic. Stockholm archipelago. Ägnö. Nämdö. Mörtö. Utö. Lighted beacons.**

<b>Insert</b>	lighted beacon FI Y 4s 1M (occas)	a)	59-14,622N	018-23,268E
<b>Insert</b>	lighted beacon FI Y 4s 1M (occas)	b)	59-12,099N	018-44,956E
<b>Insert</b>	lighted beacon FI Y 4s 1M (occas)	c)	59-09,609N	018-39,426E
<b>Insert</b>	lighted beacon FI Y 4s 1M (occas)	d)	59-09,125N	018-36,874E
<b>Amend</b>	character to Q 3M (occas)	e)	58-57,958N	018-17,638E

Bsp Stockholm M 2018/s26, s36, s37, s38, s50, Bsp Stockholm S 2018/s18, s37

Waxholmsbolaget. Publ. 3 april 2019

**\* 13911 (T)**

**Chart: 61, 616, 6162, 6163, 62**

**Sweden. Northern Baltic. E of Utö. Firing exercises. April 3 - 5.**

Expired notices: 2019:747/13865(T)

Firing exercises will be carried out within Utö firing range during stated times. The current extension of the closed area is given in the table.

Signal ammunition is used during hours of darkness.

Information during practice times VHF channel 16, call Utö skjutfält, or phone +46 8 501 570 45. Information about upcoming practice times, phone: +46 10 823 18 23, Muskö Sjöcentral.

Date	Time	Range from shore
April 3	0830 - 1800 LT	4.4 M
April 4	0830 - 2200 LT	4.4 M
April 5	0830 - 2000 LT	4.4 M

Position: Approx.	58-54N	018-20E	Utö Firing practice area
-------------------	--------	---------	--------------------------

Not shown in ENC.

Bsp Stockholm S 2018/s17, s18, s19, s37

Försvarmakten. Publ. 2 april 2019

**\* 13912**

**Chart: 6141, 6142**

**Sweden. Northern Baltic. Stockholm. Strömmen. Skeppsbron. Depths.**

A hydrographic survey has shown other depths than charted.

<b>Amend</b>	5,6 m to 3,9 m	a)	59-19,629N	018-04,569E
<b>Amend</b>	4 m to 3,5 m	b)	59-19,621N	018-04,668E

Bsp Mälaren - Hjälaren 2016/s52, Bsp Stockholm M 2018/s06, s10

Stockholms hamnar. Publ. 3 april 2019

**\* 13914 (P)**

**Chart: 6143, 6144, 615**

**Sweden. Northern Baltic. Stockholm archipelago. Sandön. Forthcoming amendments to buoyage.**

Expired notices: 2019:748/13806(P)

Forthcoming changes of buoyage next to Sandön. Preliminary positions as listed.

<b>Replace</b>	port hand light buoy with port hand light spar buoy	a)	59-18,015N	018-52,281E
<b>Move</b>	port hand light buoy from 59-17,452N 018-53,545E to	b)	59-17,432N	018-53,563E
<b>Move</b>	starboard hand light buoy from 59-17,060N 018-53,880E to	c)	59-17,034N	018-53,863E
<b>Move</b>	starboard hand light buoy from 59-16,688N 018-53,946E to	d)	59-16,683N	018-53,913E
<b>Move</b>	starboard hand spar buoy from 59-16,362N 018-54,481E to	e)	59-16,293N	018-54,534E
<b>Move</b>	port hand light buoy from 59-16,050N 018-54,395E to	f)	59-16,034N	018-54,334E
<b>Move</b>	port hand light buoy from 59 15,717N 018 55,085E to	g)	59-15,729N	018-55,099E
<b>Delete</b>	starboard hand spar buoy	h)	59-16,019N	018-55,590E
<b>Insert</b>	south cardinal spar buoy	i)	59-16,044N	018-55,626E
<b>Delete</b>	port hand spar buoy	j)	59-15,850N	018-57,184E
<b>Insert</b>	north cardinal spar buoy	k)	59-15,850N	018-57,184E
<b>Move</b>	port hand light buoy from 59-16,147N 018-57,537E to	l)	59-16,163N	018-57,548E
<b>Insert</b>	south cardinal spar buoy	m)	59-15,999N	018-59,487E

Not shown in ENC.

Bsp Stockholm M 2018/s25, s31, s32, s52, Bsp Stockholm N 2018/s35, s41

**Central Baltic**

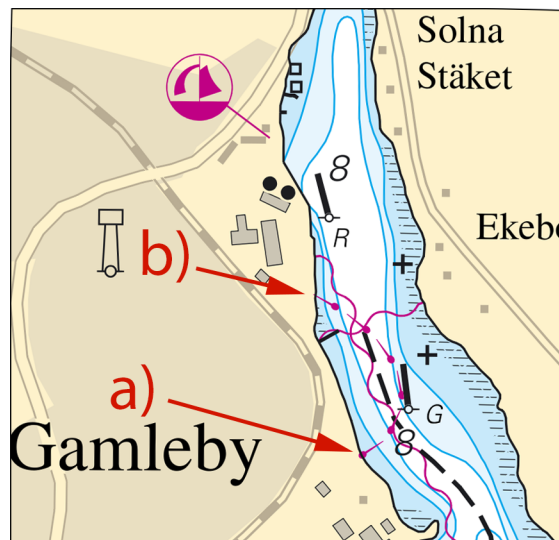
\* 13874

Chart: 623

**Sweden. Central Baltic. N of Västervik. Gamleby. Supply pipeline.**

Insert	supply pipeline a) - b) according to chartlet	a)	57-53,53N	016-25,00E
		b)	57-53,76N	016-24,87E

Bsp Ostkusten 2015/s48, s49, Bsp Ostkusten 2019/s48, s49



Gamleby

Västerviks Miljö &amp; Energi AB. Publ. 3 april 2019

13904 (T)

Chart: 6, 62, 7, 71, 731

**Sweden. Central Baltic. E of Gotska Sandön and Gotland. Pipelaying works, 'PIONEERING SPIRIT'. Nord Stream 2.**

Expired notices: 2019:744/13834

Time: from April 1 until June 2019. Note that the dates are preliminary and can be changed.

The construction of a new gas pipeline is proceeding in the waters east of Gotland. The pipelaying operation moves in a southwesterly direction, along the eastern coast of Gotland and further towards Bornholm.

The work is carried out by pipelaying vessel 'PIONEERING SPIRIT/9HA4112'.

Transport of pipes from Hanko to pipelaying vessel will be carried out by 'NORMAND NALEY/LCOS', 'SYMPHONY PROVIDER/PCVX', 'STANDARD SUPPLIER/MBFI6', 'FAR SOLITAIRE/LDYF', 'SEA SUPRA/LAEW8', 'HAVILA FORTRESS/C6NX9', 'HAVILA CRUSADER/LCAH3' and 'SAYAN PRINCESS/9HA3059'.

Due to restricted manoeuvrability of pipelaying vessel, a minimum CPA of 1 NM is requested.

E of Fårö (KP 580)	a)	58-07,7N	020-01,4E
E of Hoburgsbank (KP 770)	b)	56-33,1N	018-50,4E

Not shown in ENC.

Nord Stream 2. Publ. 2 april 2019

**Southern Baltic**

\* 13895 (P)

Chart: 839

**Sweden. Southern Baltic. Ystad. Buoyage.**

Time: Until December 2020

Development is taking place in Port of Ystad. Buoyage marks the working areas.

<b>Insert</b>	special purpose spar buoy	a)	55-24,850N	013-50,031E
<b>Insert</b>	special purpose spar buoy	b)	55-24,816N	013-49,568E
<b>Insert</b>	special purpose spar buoy	c)	55-24,793N	013-49,132E
<b>Insert</b>	starboard hand light spar buoy	d)	55-24,884N	013-48,952E
<b>Insert</b>	port hand light spar buoy	e)	55-24,931N	013-48,852E
<b>Insert</b>	special purpose spar buoy	f)	55-24,998N	013-48,643E
<b>Insert</b>	special purpose spar buoy	g)	55-25,230N	013-48,732E
<b>Insert</b>	special purpose spar buoy	h)	55-25,360N	013-48,948E
<b>Insert</b>	special purpose spar buoy	i)	55-25,406N	013-49,108E
<b>Insert</b>	special purpose spar buoy	j)	55-25,406N	013-49,275E
<b>Insert</b>	special purpose spar buoy	k)	55-25,354N	013-49,524E
<b>Insert</b>	special purpose spar buoy	l)	55-25,279N	013-49,489E
<b>Insert</b>	special purpose spar buoy	m)	55-25,166N	013-49,499E

Bsp Sydkusten 2012/s27, s52

Per Aarsleff A/S. Publ. 4 april 2019

**\* 13901 (T)**

**Chart: 7, 74, 8, 83, 839**

**Denmark, Sweden. Southern Baltic. W of Bornholm. TSS In Bornholmsgat. Baltic Pipe. Geophysical surveys.**

Expired notices: 2019:746/13854(T)

Time: Until Sep 1, 2019

Additional geophysical surveys for the Baltic Pipe project will be done at specified locations along a corridor which partly lie inside 'TSS In Bornholmsgat'.

Survey vessels	Callsign
IMOR	SNKB
NOORDHOEK PATHFINDER	PBYN
R/V MINTIS	LYAP
NORA B	

Note: A navigation warning will be issued via NAVTEX whenever deemed necessary.

a)	55-06,287N	013-51,326E	
b)	55-06,298N	014-17,177E	
c)	55-06,082N	014-19,827E	
d)	55-01,758N	014-34,583E	
e)	55-06,300N	014-05,426E	TSS In Bornholmsgat and Precautionary Area
f)	55-06,301N	014-07,777E	TSS In Bornholmsgat and Precautionary Area
g)	55-06,302N	014-10,127E	TSS In Bornholmsgat and Precautionary Area
h)	55-06,301N	014-12,477E	TSS In Bornholmsgat and Precautionary Area
i)	55-06,300N	014-14,827E	TSS In Bornholmsgat and Precautionary Area
j)	55-06,298N	014-17,177E	TSS In Bornholmsgat and Precautionary Area

Bsp Sydkusten 2012/s27, s28, s30

Ramböll AB. Publ. 30 mars 2019

**\* 13902 (T)**

**Chart: 7, 74, 8, 83, 839**

**Denmark, Sweden. Southern Baltic, South-Western Baltic. Pipeline for natural gas. Baltic Pipe. Seabed surveys.**

Expired notices: 2019:746/13855(T)

Time: Until Sep 1, 2019

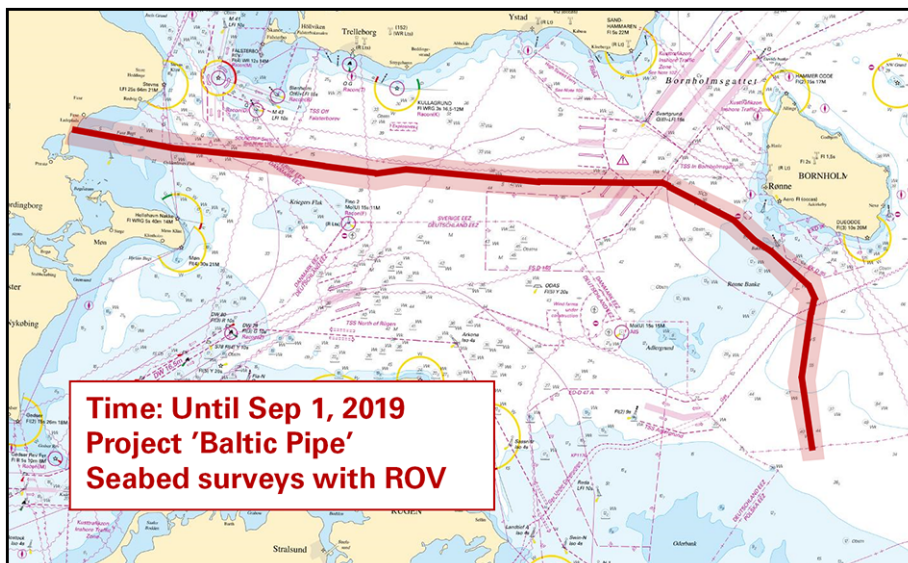
Seabed surveys using ROVs are carried out along the charted route in connection with the 'Baltic Pipe' project.

Survey vessels	Callsign
IMOR	SNKB
NOORDHOEK PATHFINDER	PBYN
R/V MINTIS	LYAP
NORA B	

Survey area a) - w)	a)	55-11,310N	012-07,196E	
	b)	55-11,088N	012-09,491E	
	c)	55-10,960N	012-10,333E	
	d)	55-10,621N	012-13,601E	
	e)	55-10,350N	012-14,696E	
	f)	55-10,007N	012-17,842E	
	g)	55-09,716N	012-21,411E	
	h)	55-09,354N	012-29,207E	
	i)	55-08,582N	012-51,345E	Swedish waters
	j)	55-07,746N	013-03,663E	Swedish waters
	k)	55-07,501N	013-20,385E	Swedish waters
	l)	55-06,281N	013-51,491E	Swedish waters
	m)	55-06,323N	014-10,949E	Swedish waters
	n)	55-06,318N	014-18,139E	
	o)	55-05,967N	014-20,235E	
	p)	55-01,740N	014-34,637E	
	q)	54-59,236N	014-39,007E	
	r)	54-57,781N	014-42,801E	
	s)	54-53,521N	014-51,251E	
	t)	54-51,797N	014-52,361E	
	u)	54-50,019N	014-51,558E	
	v)	54-41,852N	014-49,734E	
	w)	54-32,725N	014-52,166E	

Not shown in ENC.

Bsp Hanöbukten 2018/s07, Bsp Sydkusten 2012/s05, s06, s07, s23, s26, s27, s28, s30



ROV survey area, Baltic Pipe Project

**Kattegat****\* 13913 (T)****Chart: 924****Sweden. Kattegat. Port of Falkenberg. Leading light unreliable.**

Time: Until further notice

Leading lights in to Port of Falkenberg are not working correctly. Mariners should be careful when using them for navigation.

Leading lights Falkenberg övre	56-53,57N	012-28,74E
Leading lights Falkenberg nedre	56-53,36N	012-28,50E

Not shown in ENC.

Bsp Västskusten S 2016/s27, s66, Bsp Västskusten S 2019/s27, s66

*Farledsteknik AB. Publ. 3 april 2019***Skagerrak****\* 13892 (P)****Chart: 93, 933****Sweden. Skagerrak. NW of Kungshamn. Sotenäs Wave Energy Park. Buoyage withdrawn.**

Buoyage at Sotenäs Wave Energi Park will be withdrawn. Entry prohibited continues to apply.

<b>Delete</b>	special light buoy with AIS transmitter	58-23,248N	011-07,706E
<b>Delete</b>	special light buoy with AIS transmitter	58-23,336N	011-08,459E
<b>Delete</b>	special light buoy with AIS transmitter	58-22,753N	011-08,723E
<b>Delete</b>	special light buoy with AIS transmitter	58-22,631N	011-08,125E

Bsp Västskusten N 2016/s14, Bsp Västskusten N 2019/s14

*Transportstyrelsen. Publ. 29 mars 2019*